

D.O.S.E

OF HAPPINESS AT

Sahel



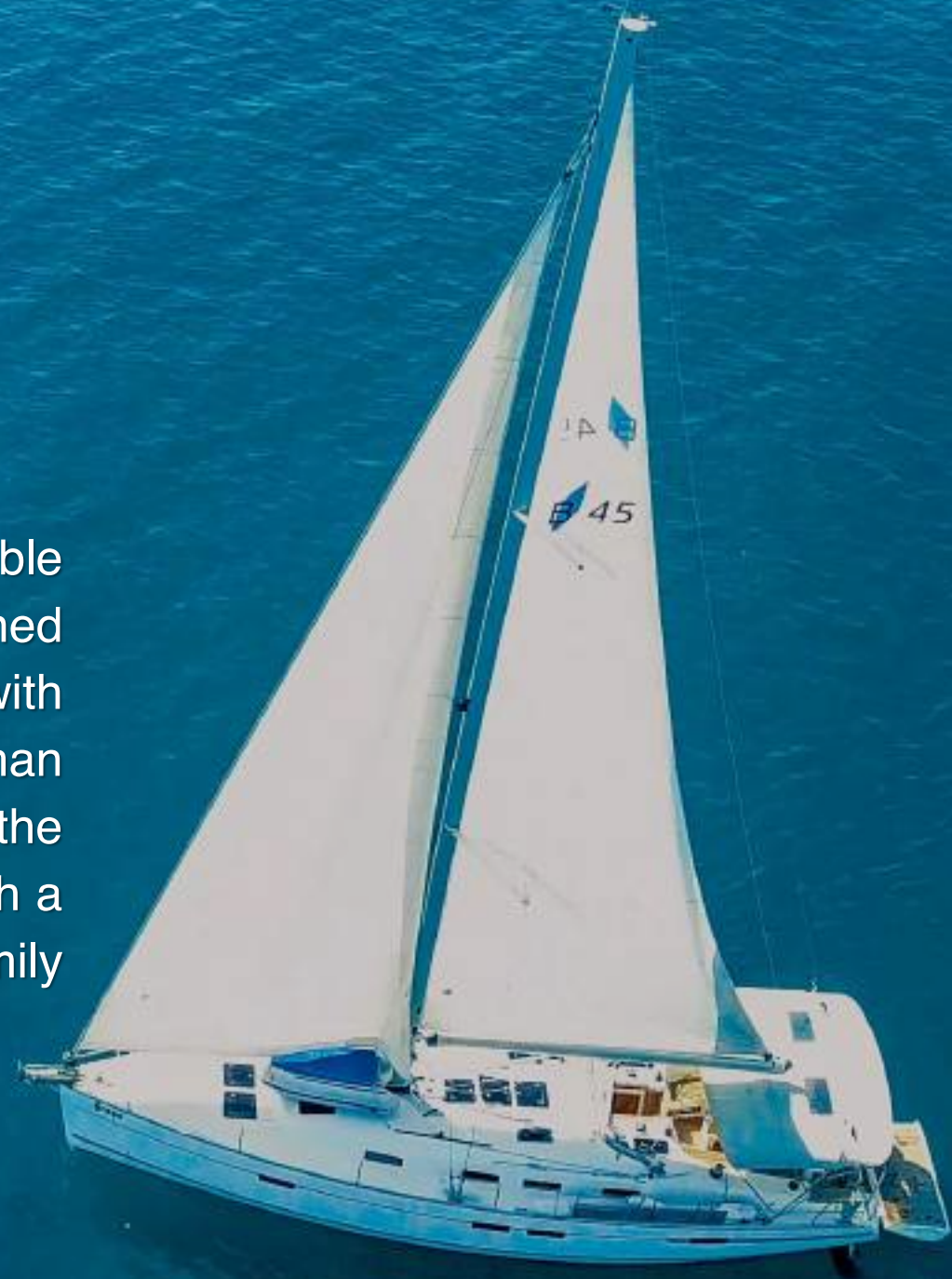
PROJECT
TYPES

By AKAM ALRAJHI
DEVELOPMENTS

AKAM ALRAJHI

DEVELOPMENTS

A grand joint venture well bonded to imprint a remarkable milestone in the real estate market, two industry giants determined to change the norm and build communities that inspire. Akam, with its wide experience and innovative solutions to enhance human lives, and AlRajhi, with a great history of trust established over the years, are creating a new name today to empower the world with a brand new definition of an enhanced homesteading. Join our family and live the change.



D.O.S.E

OF HAPPINESS AT
Sahel

Feel the singularity of existing in a new world every season, breaking every routine in a place filled with amusement, where you get to explore a brand new Sahel tailored upon studies to comfort your senses, answer your needs, and make you live the happiest summer memories.



OUR LOCATION

Along the coastline of the charming new Sahel, find our land elevated on the luxurious shore of El Dabaa, where it only takes you three hours to arrive from Cairo to D.O.S.E at the 174th km to enjoy the finest aqua blues and softest golden sands ever found. Just 23 kms away from El Alamein airport, draw your first footprints on a 125 acres of land where every inch is saturated with happiness and indulgence to make your departure mission your last option.



La Vista Bay East

The Waterway North Coast

La Vista Bay

D.O.S.E
OF HAPPINESS AT
Sahel

The Avenue

Lord Of The Wings

Dreams Market

Al Rahma Mosque

Asphalt Limousine

saniyat jabir

Al Haraby Mosque

North Coast Road



Sway Chalets

Day Serviced Appartement

Iconic Villa

Epic Chalets

Kernel House

Airy Villa

Sway Chalets



Airry Villa



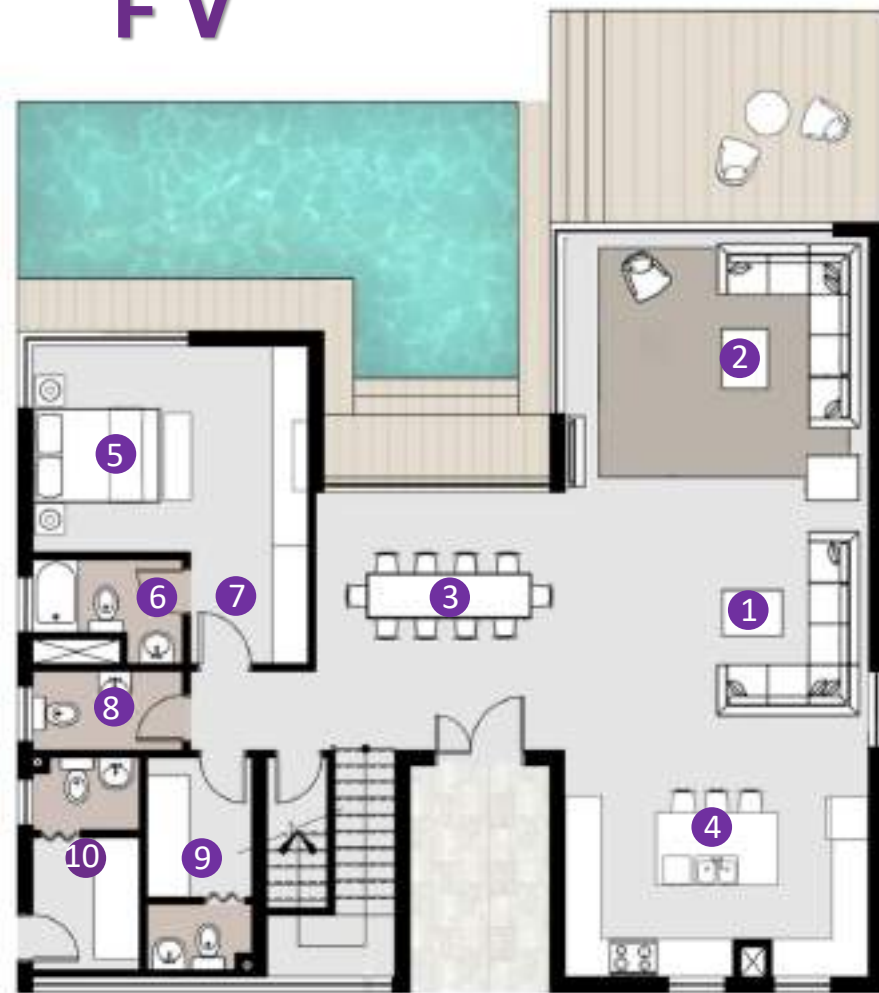
Airy Villa

S T A N D A L O N E

FV



FV



GROUND FLOOR



FIRST FLOOR

1- Reception 1	4.80 x 5.00 m	6- Bathroom 1	1.70 x 2.45 m
2- Reception 2	4.20 x 5.00 m	7- Bedroom Ent.	1.85 x 1.95 m
3- Dining	4.10 x 4.25 m	8- Guest Bathroom	1.30 x 2.50 m
4- Kitchen	3.20 x 5.00 m	9- Maid's Room	1.70 x 3.60 m
5- Bedroom 1	3.40 x 4.50 m	10- Drivers Room	1.75 x 3.60 m
		* Outdoor Terrace	5.10 x 3.90 m

11- Lobby	1.60 x 7.25 m	19- Bedroom 4 Ent.	1.05 x 2.30 m
12- Bedroom 2	3.60 x 3.60 m	20- Living	3.70 x 5.85 m
13- Bathroom 2	1.85 x 2.00 m	21- Bedroom 5	4.00 x 4.50 m
14- Bedroom 3	3.60 x 3.80 m	22- Bathroom 5	1.60 x 2.45 m
15- Bathroom 3	1.85 x 2.00 m	23- Bedroom 5 Ent.	1.85 x 1.95 m
16- Bedroom 4	4.40 x 5.00 m	24- Bedroom 6	3.60 x 3.60 m
17- Bathroom 4	1.60 x 2.40 m	25- Bathroom 6	1.60 x 2.45 m
18- Dressing	1.80 x 2.10 m	26- Terrace	3.00 x 9.00 m

BUA **395** M²

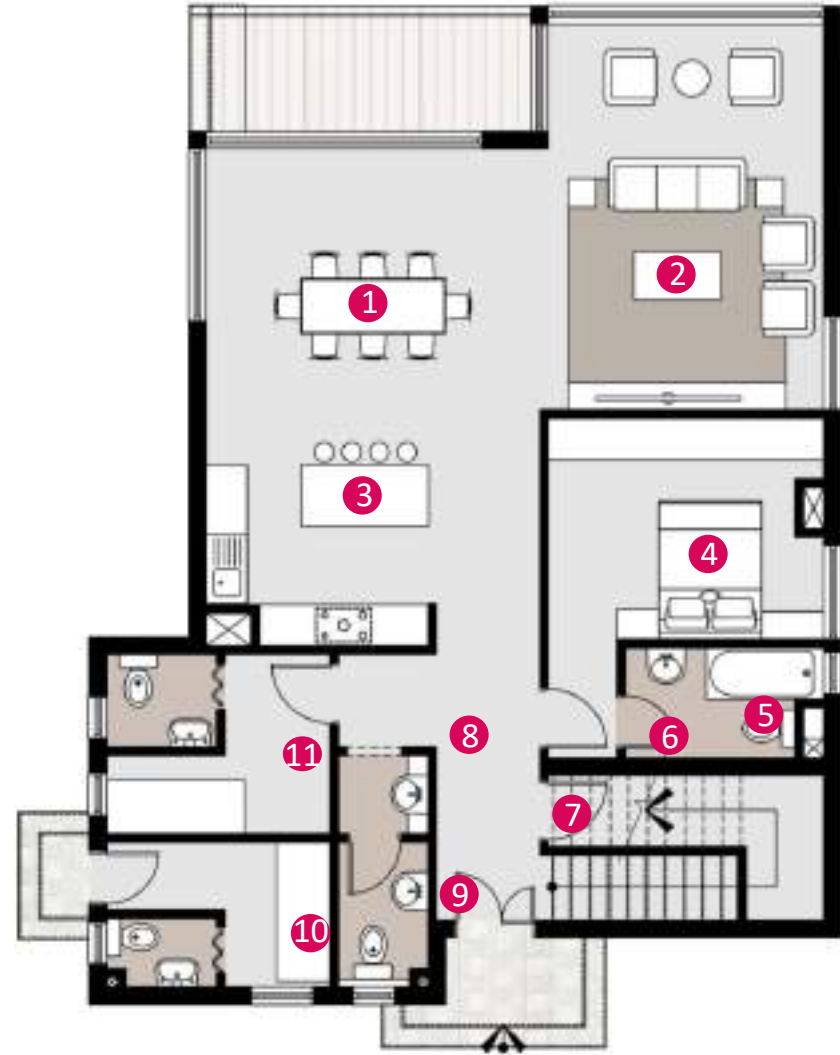
Airy Villa

S T A N D A L O N E

SV

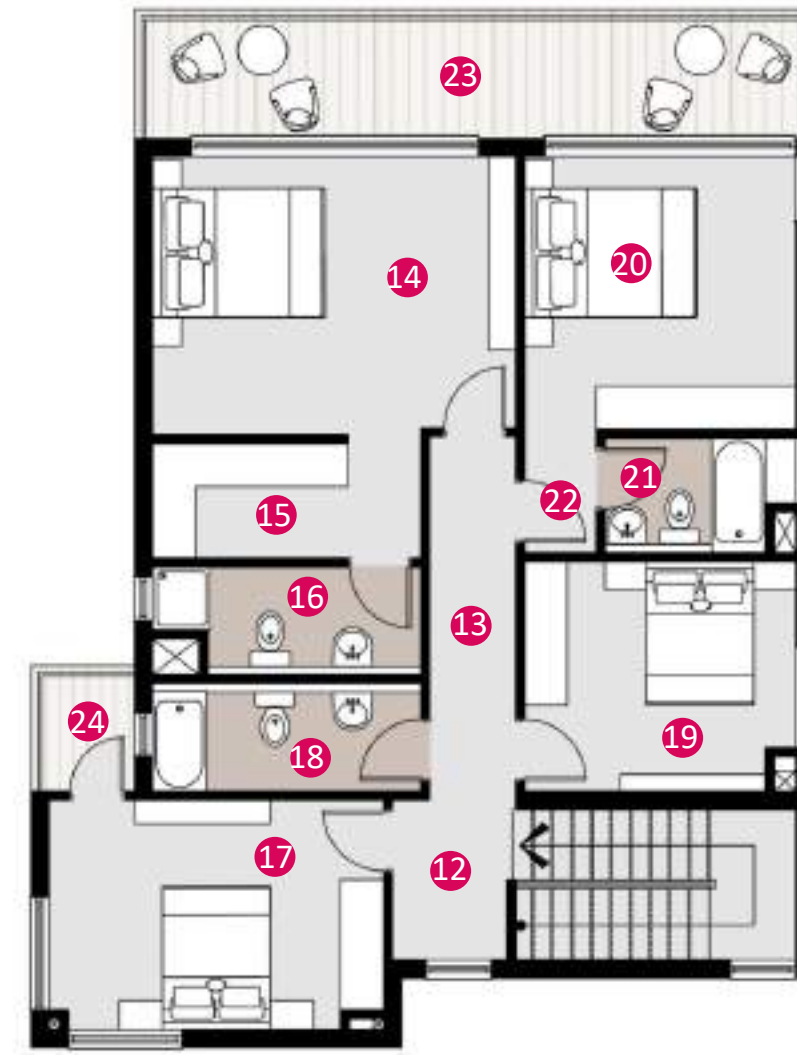


Airy STANDALONE SV



GROUND FLOOR

1- Dining	3.80 x 4.85 m	7- Foyer	1.50 x 4.00 m
2- Reception	4.10 x 5.60 m	8- Lobby 1	1.35 x 1.40 m
3- Kitchen	3.40 x 4.85 m	9- Guest Bathroom	1.30 x 3.35 m
4- Bedroom 1	3.20 x 4.00 m	10- Driver's Room	2.10 x 3.25 m
5- Bathroom 1	1.60 x 2.90 m	11- Maid's Room	2.60 x 3.25 m
6- Bedroom 1 Ent.	1.00 x 1.70 m		



FIRST FLOOR

12- Lobby 2	1.70 x 2.20 m	19- Bedroom 3	3.20 x 3.80 m
13- Corridor	1.20 x 5.00 m	20- Bedroom 4	3.80 x 3.80 m
14- Master Bedroom	3.80 x 5.00 m	21- Bathroom 4	1.60 x 2.75 m
15- Dressing	1.70 x 3.75 m	22- Bedroom 4 Ent.	0.90 x 1.60 m
16- Master Bathroom	1.50 x 3.75 m	23- Terrace 1	1.80 x 9.45 m
17- Bedroom 2	3.20 x 4.65 m	24- Terrace 2	1.45 x 1.75 m
18- Bathroom 2	1.50 x 3.75 m		

BUA **278** M²

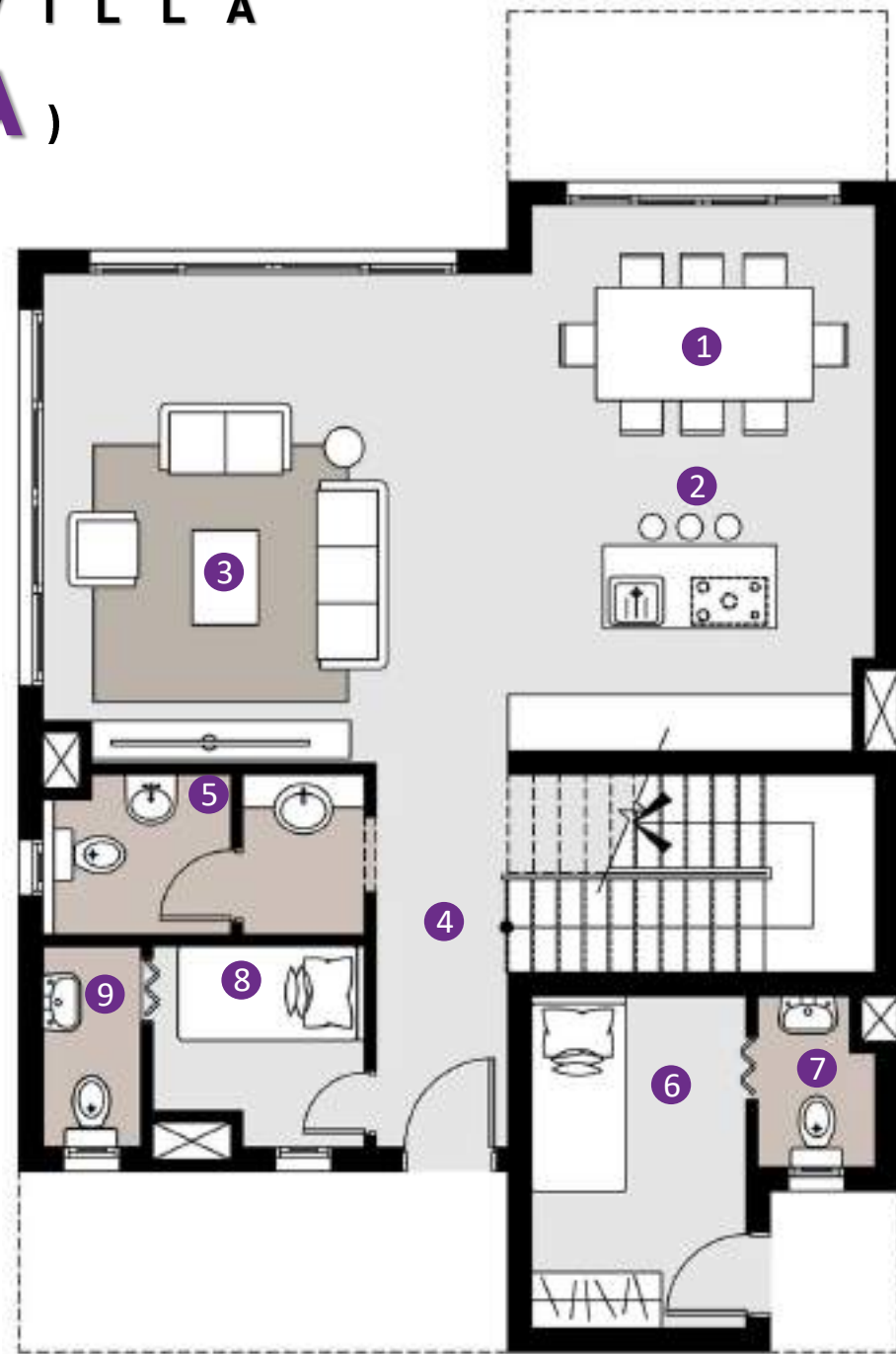
Airy Villa

TWIN VILLA



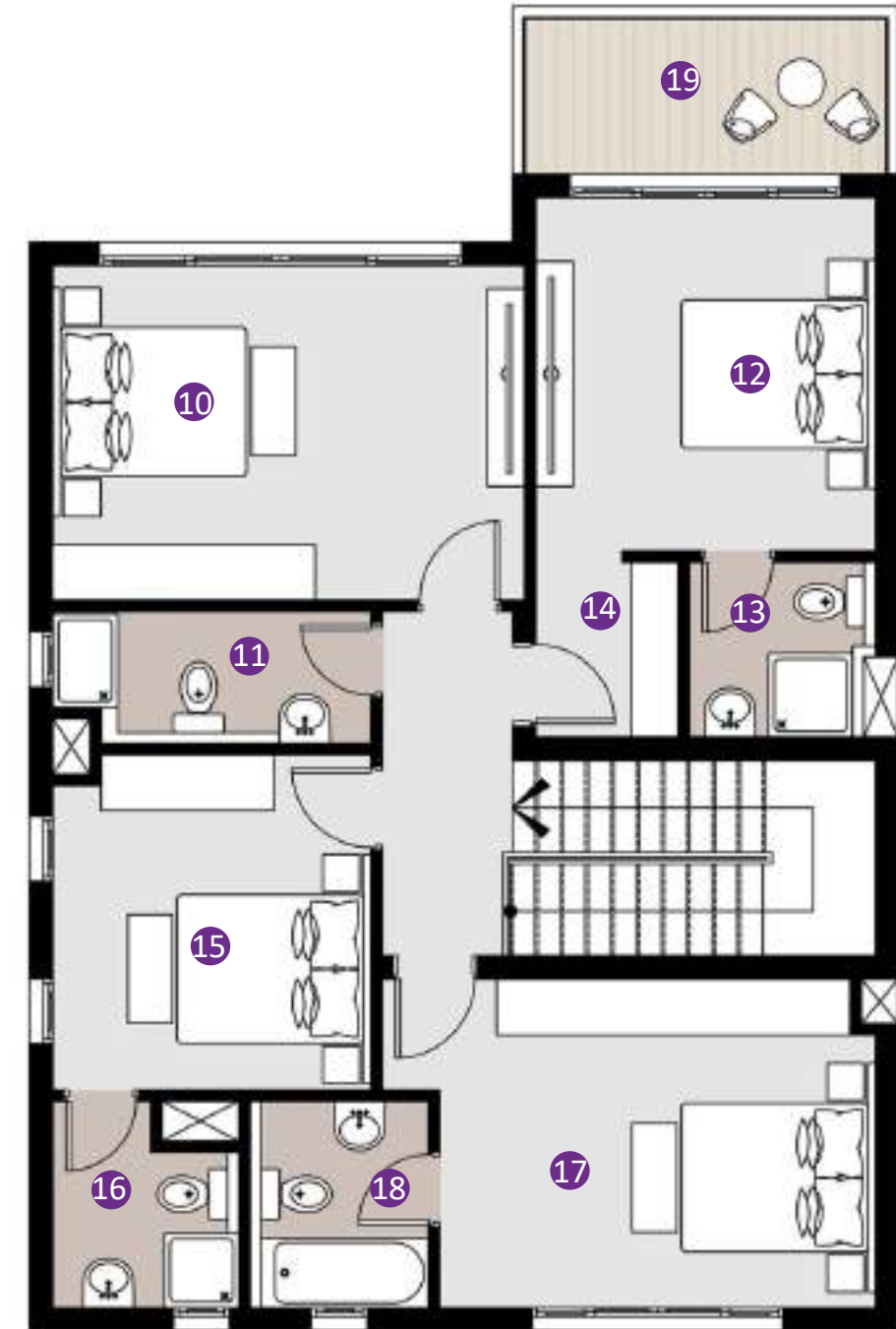
Airy TWIN VILLA (A)

- 1- Dining 3.60 X 3.65 m
- 2- Kitchen 2.20 x 3.65 m
- 3- Reception 5.20 x 5.20 m
- 4- Foyer 1.40 x 4.10 m
- 5- Guest Bathroom 1.70 x 3.40 m
- 6- Driver's Room 2.30 x 3.50 m
- 7- Driver's Bathroom 1.25 x 1.80 m
- 8- Maid's Room 2.15 x 2.25 m
- 9- Maid's Bathroom 1.05 x 2.15 m



GROUND FLOOR

- 10- Bedroom 1 3.60 x 5.05 m
- 11- Bathroom 1 1.40 x 3.40 m
- 12- Bedroom 2 3.65 x 3.80 m
- 13- Bathroom 2 1.75 x 1.90 m
- 14- Dressing 1.50 x 1.90 m
- 15- Bedroom 3 3.40 x 3.60 m
- 16- Bathroom 3 2.00 x 2.20 m
- 17- Bedroom 4 3.50 x 4.70 m
- 18- Bathroom 4 1.90 x 2.20 m
- 19- Terrace 1.80 x 4.00 m

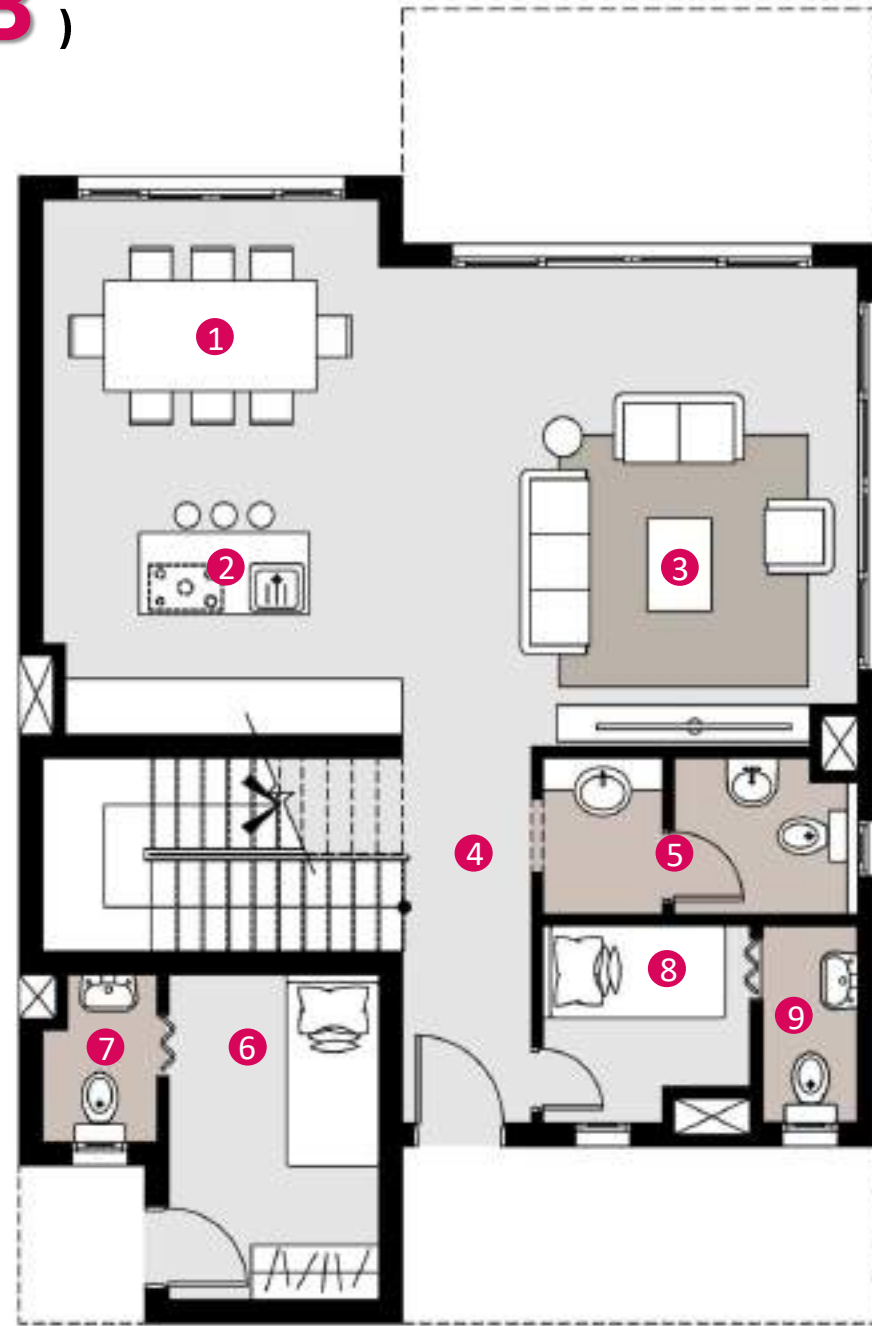


FIRST FLOOR

BUA **229** M²

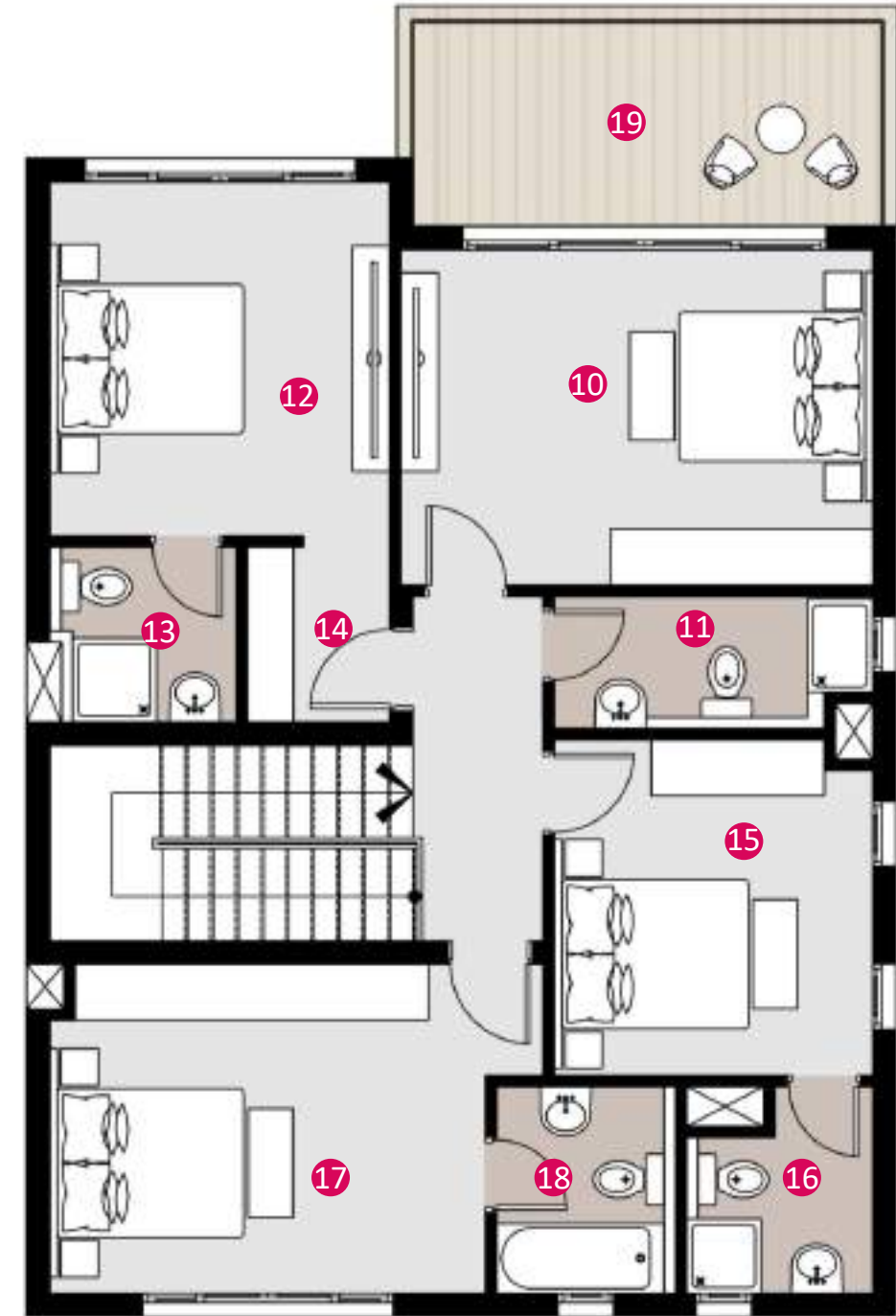
Airy TWIN VILLA (B)

- 1- Dining 3.60 X 3.65 m
- 2- Kitchen 2.20 x 3.65 m
- 3- Reception 5.20 x 5.20 m
- 4- Foyer 1.40 x 4.10 m
- 5- Guest Bathroom 1.70 x 3.40 m
- 6- Driver's Room 2.30 x 3.50 m
- 7- Driver's Bathroom 1.25 x 1.80 m
- 8- Maid's Room 2.15 x 2.25 m
- 9- Maid's Bathroom 1.05 x 2.15 m



GROUND FLOOR

- 10- Bedroom 1 3.60 x 5.05 m
- 11- Bathroom 1 1.40 x 3.40 m
- 12- Bedroom 2 3.65 x 3.80 m
- 13- Bathroom 2 1.75 x 1.90 m
- 14- Dressing 1.50 x 1.90 m
- 15- Bedroom 3 3.40 x 3.60 m
- 16- Bathroom 3 2.00 x 2.20 m
- 17- Bedroom 4 3.50 x 4.70 m
- 18- Bathroom 4 1.90 x 2.20 m
- 19- Terrace 2.50 x 5.30 m



FIRST FLOOR

BUA **236** M²

An aerial photograph of a person swimming in clear, turquoise water. The person is positioned in the center of the frame, wearing a dark swimsuit and a life preserver. The water's surface is textured with ripples and small waves. Overlaid on the image is the text "Kernel House" in a white, cursive font. The word "Kernel" is on the left, "House" is on the right, and the person is swimming through the letter "e" in "Kernel".

Kernel House

Kernel House

T O W N H O U S E



Kernel House

T O W N H O U S E



Kernel TOWNHOUSE

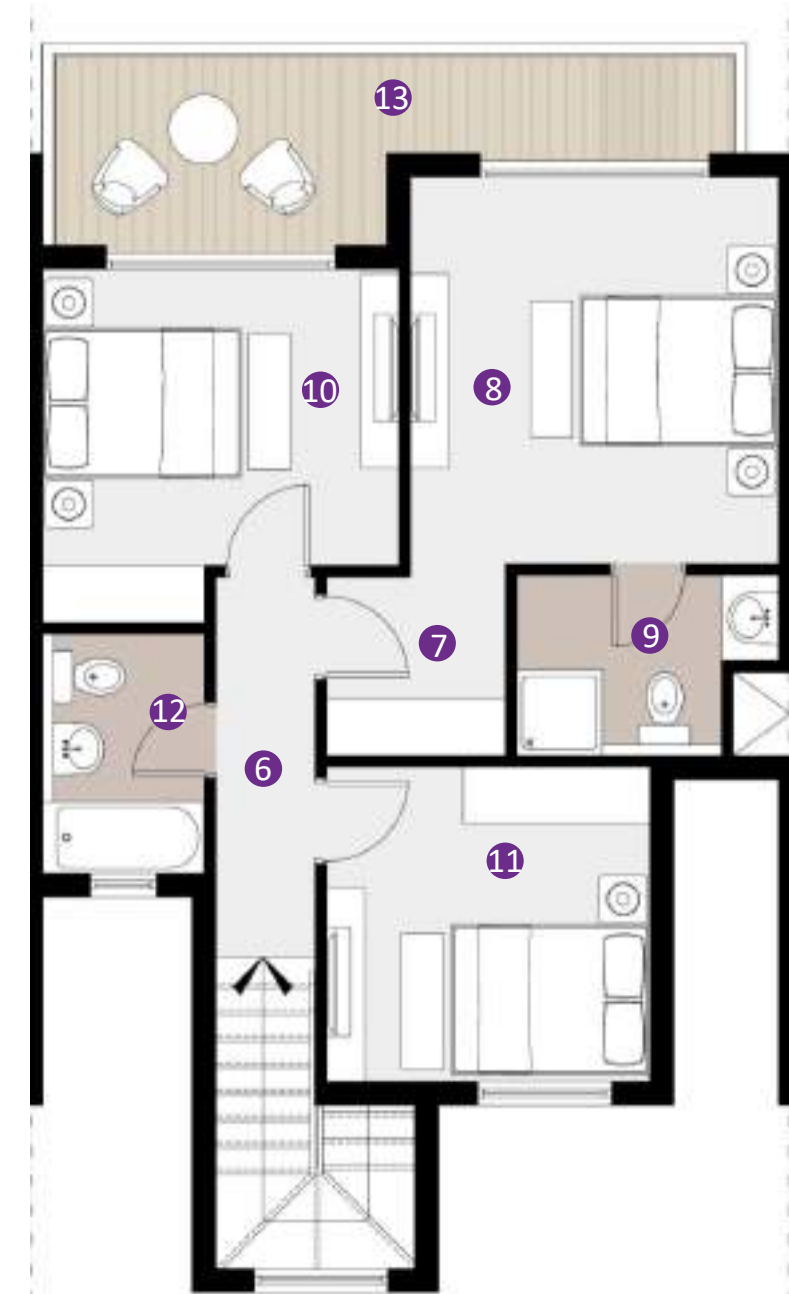
(A)

- 1- Dining 3.40 x 3.70 m
- 2- Kitchen 2.70 x 3.70 m
- 3- Reception 4.00 X 5.10 m
- 4- Guest Bathroom 1.10 x 2.90 m
- 5- Foyer 1.90 x 2.45 m



GROUND FLOOR

- 6- lobby 1.05 x 4.00 m
- 7- Dressing 1.90 x 1.90 m
- 8- Bedroom 1 3.85 x 4.05 m
- 9- Bathroom 1 1.90 x 2.75 m
- 10- Bedroom 2 3.70 x 3.75 m
- 11- Bedroom 3 3.30 x 3.40 m
- 12- Bathroom 1.70 x 2.50 m
- 13- Terrace 2.10 x 7.40 m



FIRST FLOOR

BUA **160** M²

Kernel TOWNHOUSE

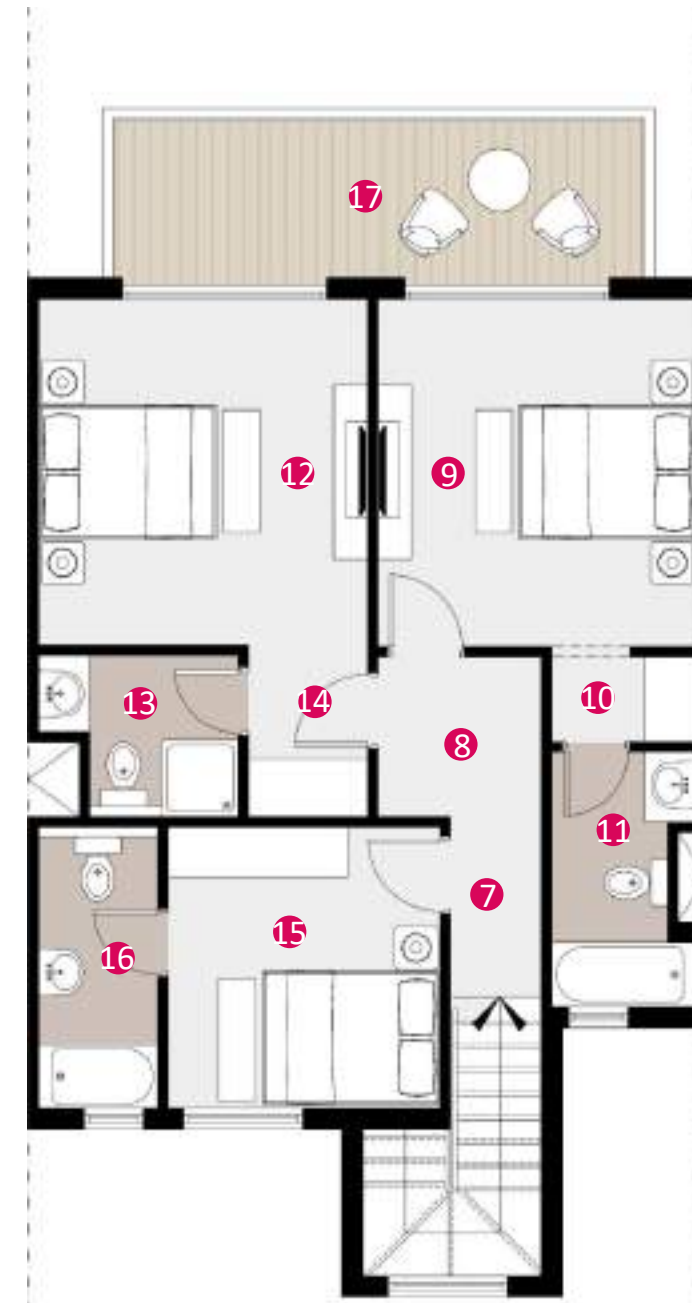
(B)

- 1- Dining 3.15 x 3.70 m
- 2- Kitchen 2.80 x 3.70 m
- 3- Living 4.00 x 6.00 m
- 4- Guest Bathroom 1.80 x 2.60 m
- 5- Maid's Room 2.10 x 3.30 m
- 6- Foyer 2.10 x 2.45 m



GROUND FLOOR

- 7- Lobby 1 1.10 x 2.10 m
- 8- Lobby 2 1.90 x 1.90 m
- 9- Bedroom 1 3.75 x 4.10 m
- 10- Dressing 1.00 x 1.70 m
- 11- Bathroom 1 1.70 x 3.00 m
- 12- Bedroom 2 3.90 x 4.10 m
- 13- Bathroom 2 1.90 x 2.35 m
- 14- Bedroom 2 Ent. 1.40 x 2.00 m
- 15- Bedroom 3 3.20 x 3.30 m
- 16- Bathroom 3 1.40 x 3.30 m
- 17- Terrace 2.00 x 6.50 m



FIRST FLOOR

BUA **184** M²

A person is relaxing on a lounge chair by a swimming pool. The person's legs and feet are visible, wearing a light-colored swimsuit. In the foreground, two hands are holding drinks. One hand holds a clear glass with a green drink, ice, and fresh mint leaves. The other hand holds a glass of pink drink with a slice of grapefruit and a black straw. The background shows a swimming pool with blue water and a wooden deck.

Jay

Serviced Apartment

Jay Serviced Apartment

SERVICED APARTMENT



Jay Serviced Apartment

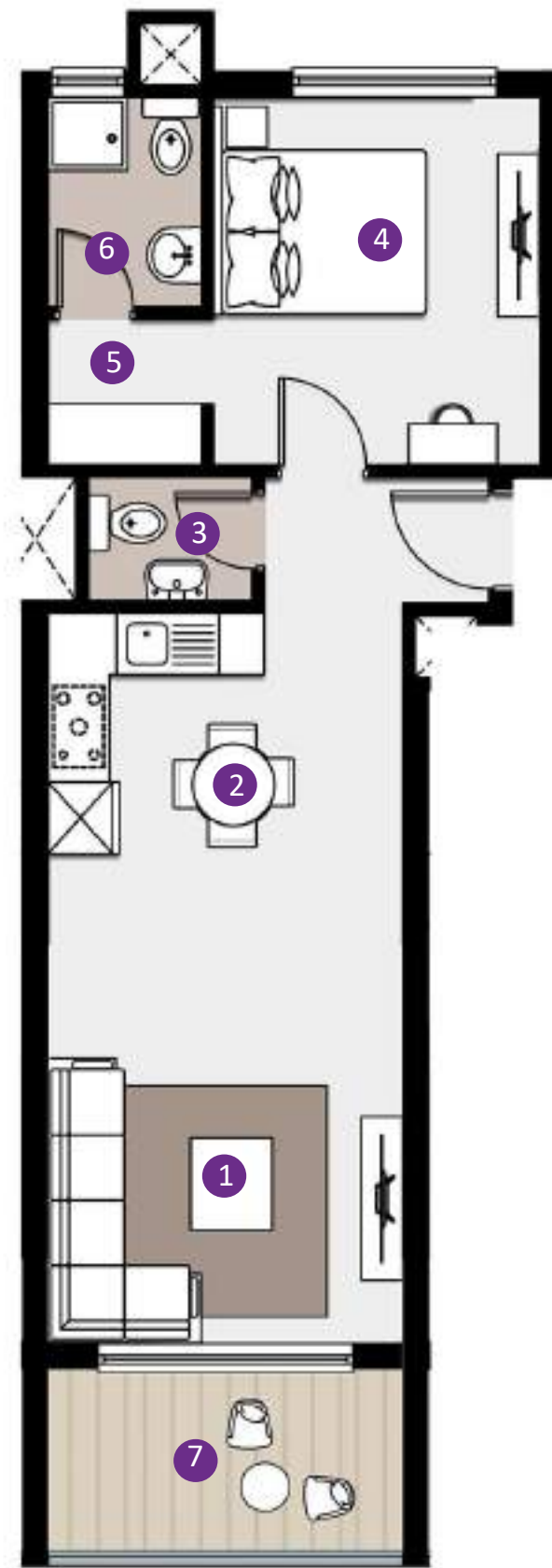
SERVICED APARTMENT



jay SERVICED APARTMENT
ONE BEDROOM (A)

	1- Reception	3.40 x 4.00 m
	2- Dining and Kitchen	3.15 x 3.40 m
	3- Guest Bathroom	1.20 x 1.70 m
	4- Bedroom 1	3.20 x 3.60 m
	5- Dressing	1.45 x 1.50 m
	6- Bathroom 1	1.50 x 2.05 m
	7- Terrace	1.90 x 3.60 m
Gross area Without Terraces		63 M²
Terraces Net Area		7.00 M²

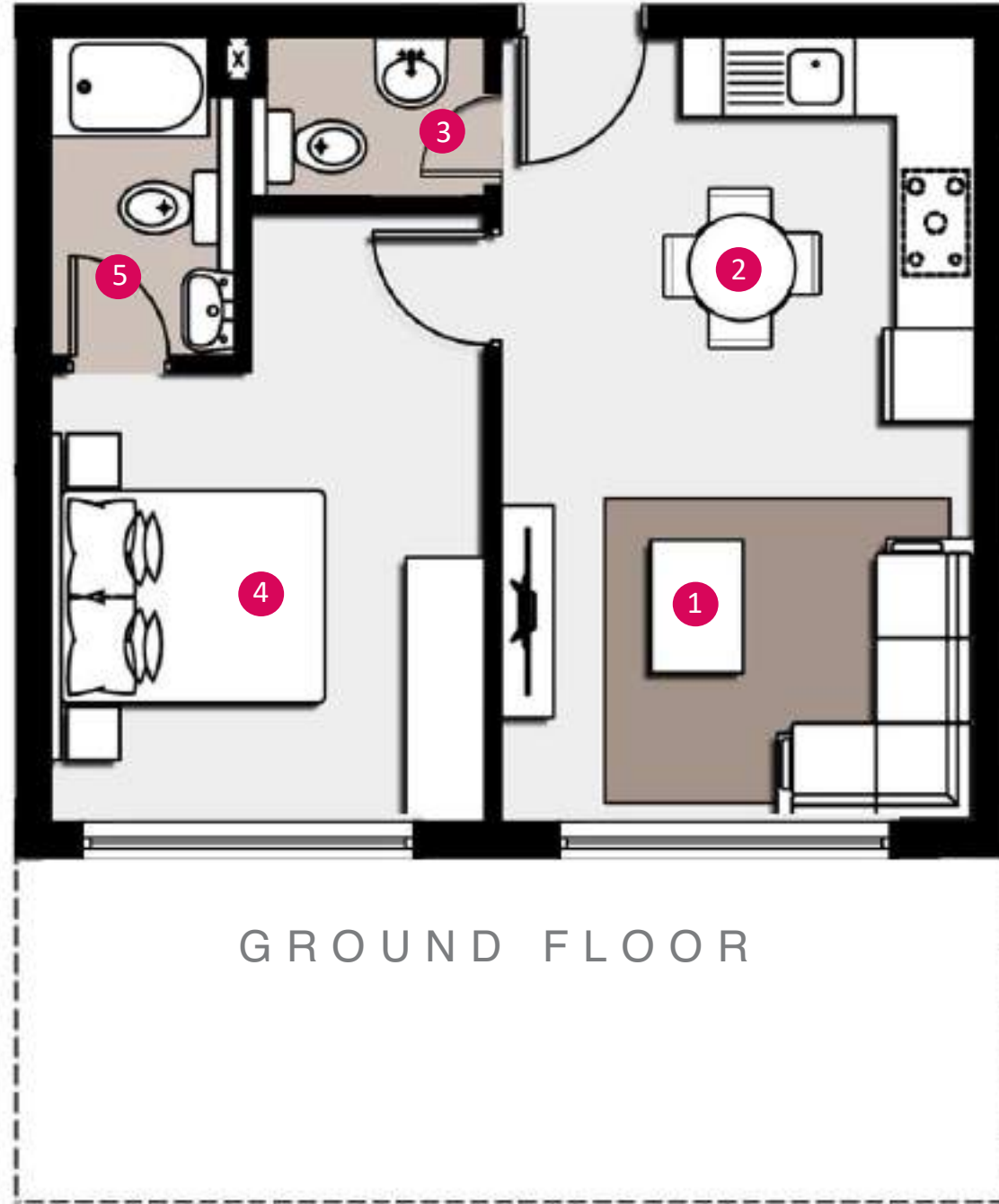
BUA **70 M²**



TYPICAL FLOOR



jay SERVICED APARTMENT
ONE BEDROOM (**B**)



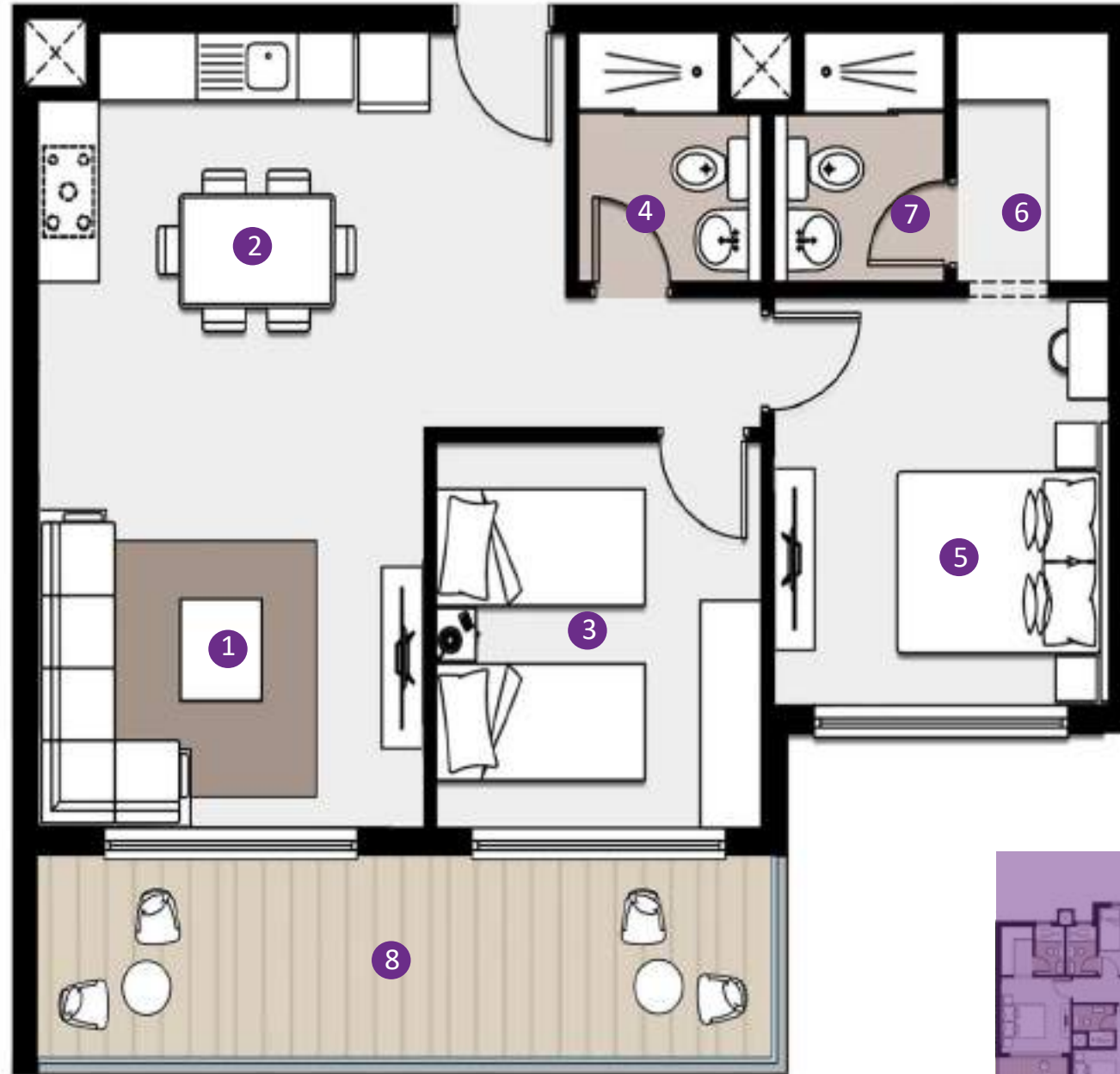
1- Reception	3.00 x 3.60 m
2- Dining and Kitchen	2.90 x 3.60 m
3- Guest Bathroom	1.20 x 1.80 m
4- Bedroom	3.30 x 3.40 m
5- Bathroom	1.40 x 2.40 m
Gross area Without Terraces	55 M²
Terraces Net Area	13 M²
BUA	68 M²



jay SERVICED APARTMENT
TWO BEDROOMS (A)

1- Reception	3.80 x 3.50 m
2- Dining and Kitchen	3.50 x 5.20 m
3- Bedroom 1	3.20 x 3.40 m
4- Bathroom 1	1.80 x 2.20 m
5- Master Bedroom	3.30 x 3.60 m
6- Dressing	1.50 x 2.20 m
7- Master Bathroom	1.70 x 2.20 m
8- Terrace	1.90 x 7.50 m
Gross area Without Terraces	92 M²
Terraces Net Area	14 M²

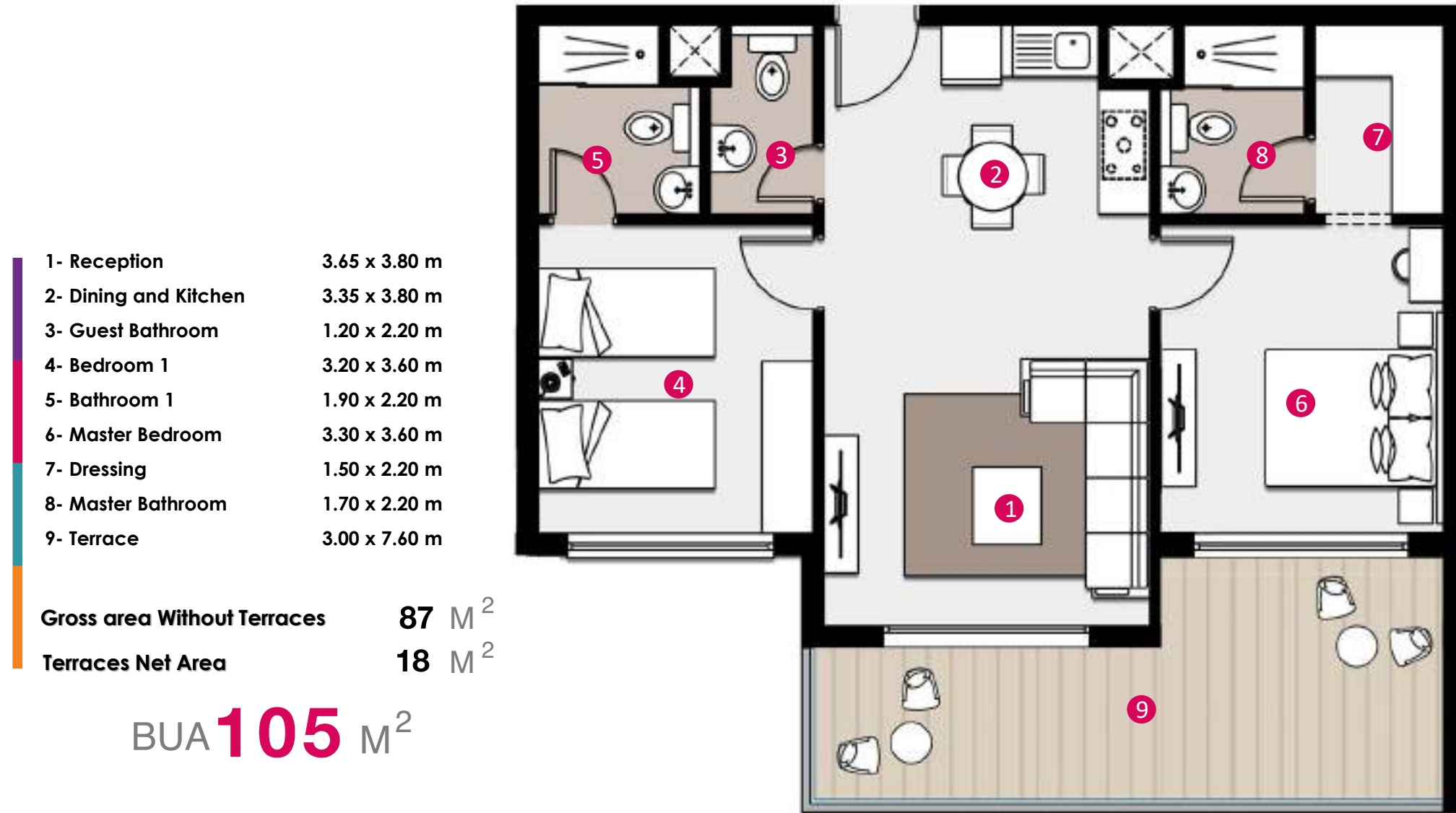
BUA **106 M²**



TYPICAL FLOOR



jay SERVICED APARTMENT
TWO BEDROOMS (**B**)

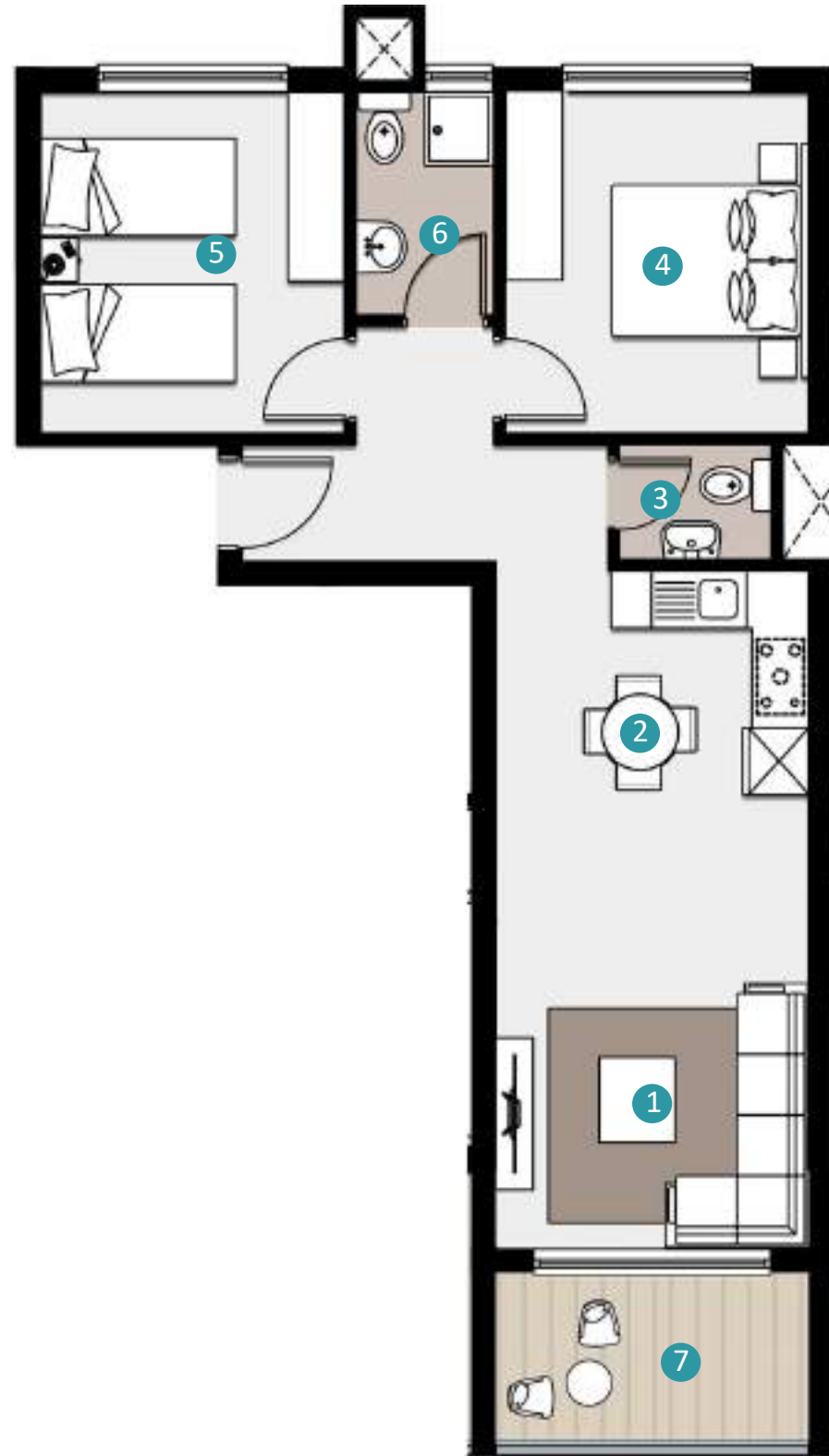


BUA **105** M²

TYPICAL FLOOR



jay SERVICED APARTMENT
TWO BEDROOMS (C)



- 1- Reception 3.40 x 4.00 m
- 2- Dining and Kitchen 3.15 x 3.40 m
- 3- Guest Bathroom 1.20 x 1.70 m
- 4- Bedroom 1 3.30 x 3.60 m
- 5- Bedroom 2 3.20 x 3.60 m
- 6- Bathroom 1 1.45 x 2.35 m
- 7- Terrace 1.90 x 3.60 m

Gross area Without Terraces 82 M²
Terraces Net Area 7.00 M²

BUA 89 M²



TYPICAL FLOOR

jay SERVICED APARTMENT
THREE BEDROOMS (A)

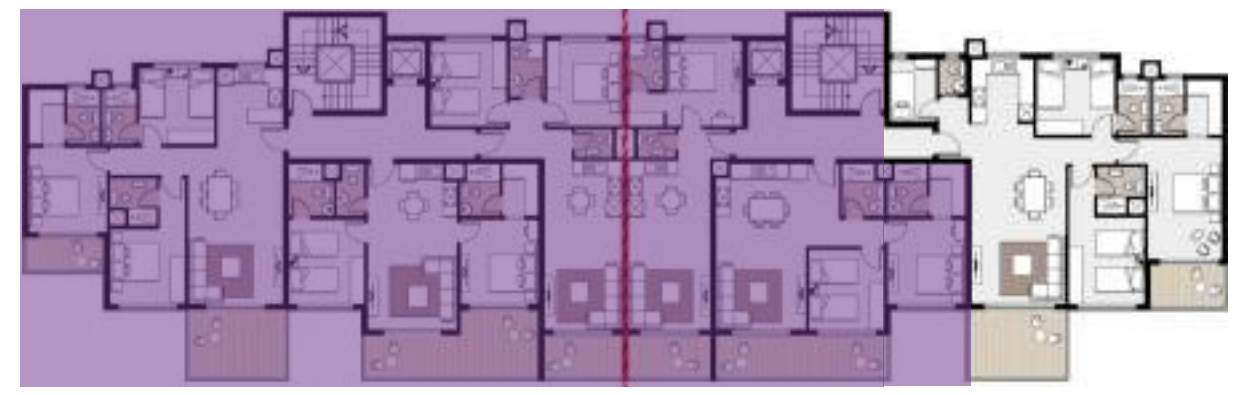
- 1- Reception and Dining 3.95 x 7.05 m
- 2- Kitchen 2.60 x 3.20 m
- 3- Bedroom 1 3.20 x 3.30 m
- 4- Bathroom 1 1.30 x 2.30 m
- 5- Bedroom 2 3.20 x 3.60 m
- 6- Bathroom 2 2.00 x 2.00 m
- 7- Master Bedroom 3.20 x 5.00 m
- 8- Dressing 1.50 x 2.30 m
- 9- Master Bathroom 1.30 x 2.30 m
- 10- Lobby 1.20 X 2.10 m
- 11- Guest Bathroom 1.10 X 1.50 m
- 12- Maid's Room 1.95 x 2.65 m
- 13- Terrace 1 3.00 x 4.25 m
- 14- Terrace 2 2.05 x 3.30 m

Gross area Without Terraces 145 M²
Terraces Net Area 19 M²

BUA 164 M²

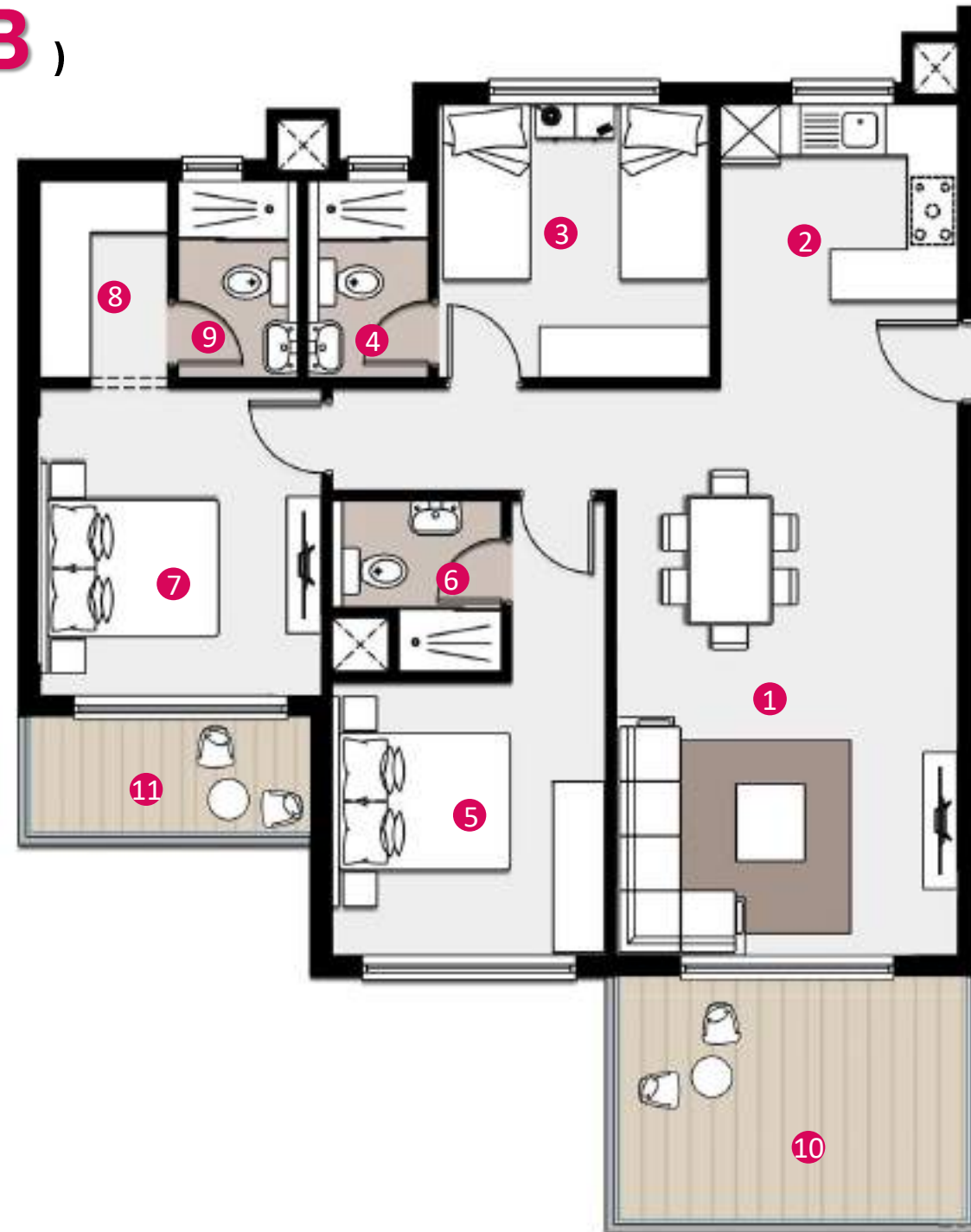


TYPICAL FLOOR



jay SERVICED APARTMENT
THREE BEDROOMS (**B**)

1- Reception and Dining	4.00 x 6.65 m
2- Kitchen	2.80 x 3.30 m
3- Bedroom 1	3.20 x 3.20 m
4- Bathroom 1	1.40 x 2.30 m
5- Bedroom 2	3.20 x 3.20 m
6- Bathroom 2	2.00 x 2.00 m
7- Master Bedroom	3.30 x 3.60 m
8- Dressing	1.50 x 2.30 m
9- Master Bathroom	1.30 x 2.30 m
10- Terrace 1	3.00 x 4.40 m
11- Terrace 2	1.50 x 3.40 m
Gross area Without Terraces	122 M²
Terraces Net Area	18 M²
BUA	140 M²



TYPICAL FLOOR



Sway

Chalet



Sway Chalet



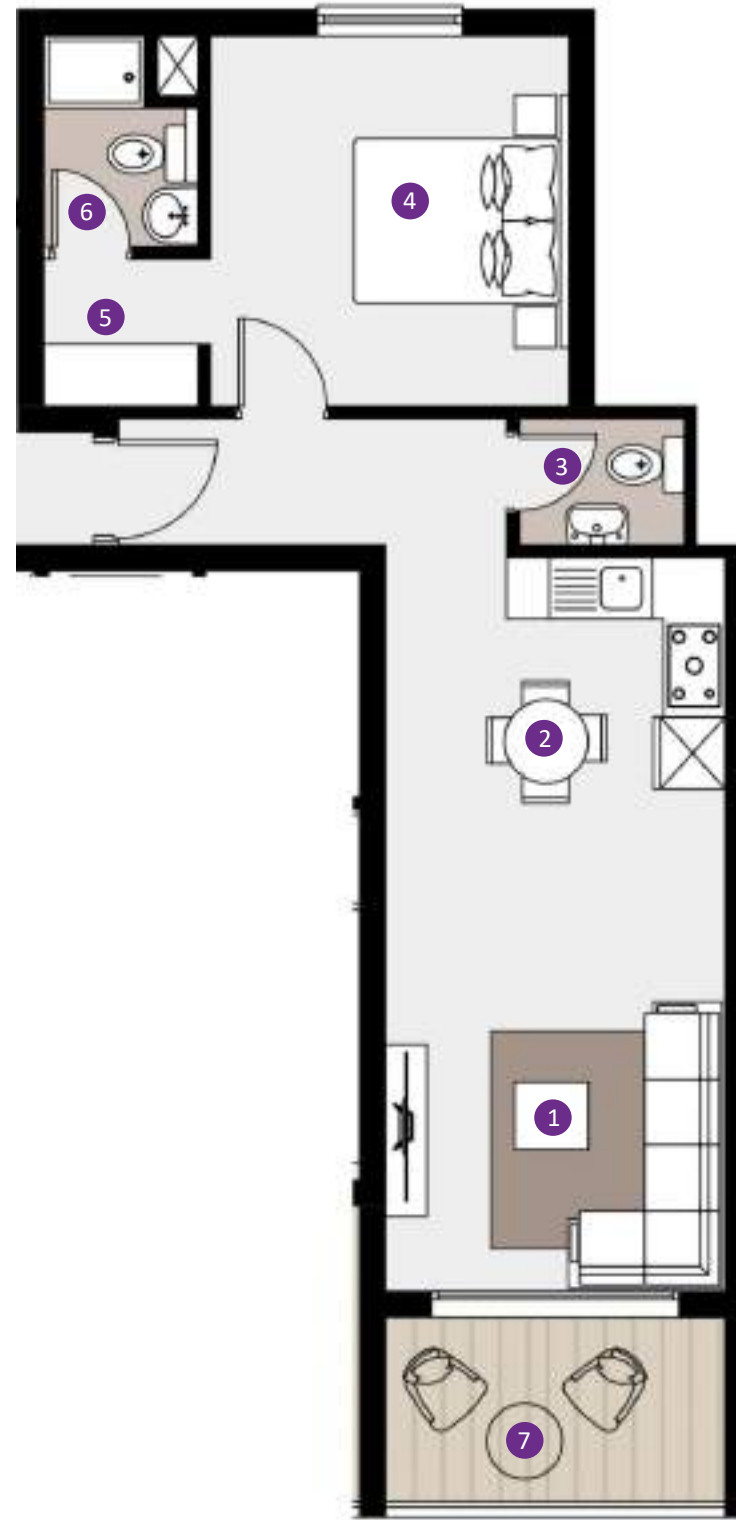
Sway CHALET

ONE BEDROOM (A)

- 1- Reception 3.40 x 4.00 m
- 2- Dining and Kitchen 3.15 x 3.40 m
- 3- Guest Bathroom 1.20 x 1.70 m
- 4- Bedroom 1 3.20 x 3.60 m
- 5- Dressing 1.45 x 1.50 m
- 6- Bathroom 1 1.50 x 2.05 m
- 7- Terrace 1.90 x 3.60 m

Gross area Without Terraces **63** M²
 Terraces Net Area **7.00** M²

BUA **70** M²



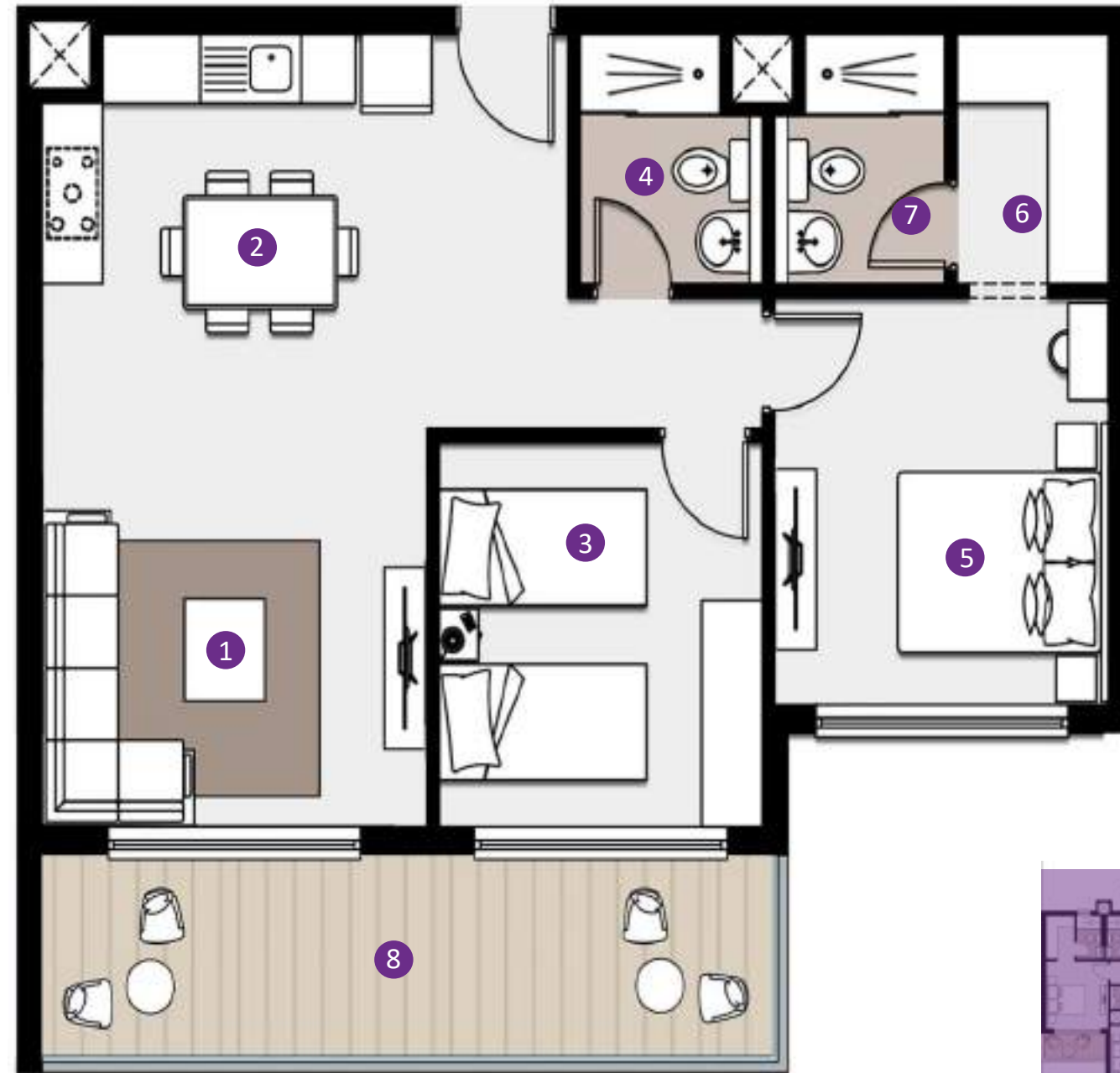
TYPICAL FLOOR



Sway CHALET

TWO BEDROOMS (A)

1- Reception	3.80 x 3.50 m
2- Dining and Kitchen	3.50 x 5.20 m
3- Bedroom 1	3.20 x 3.40 m
4- Bathroom 1	1.80 x 2.20 m
5- Master Bedroom	3.30 x 3.60 m
6- Dressing	1.50 x 2.20 m
7- Master Bathroom	1.70 x 2.20 m
8- Terrace	1.90 x 7.50 m
Gross area Without Terraces	92 M²
Terraces Net Area	14 M²
BUA	106 M²



TYPICAL FLOOR

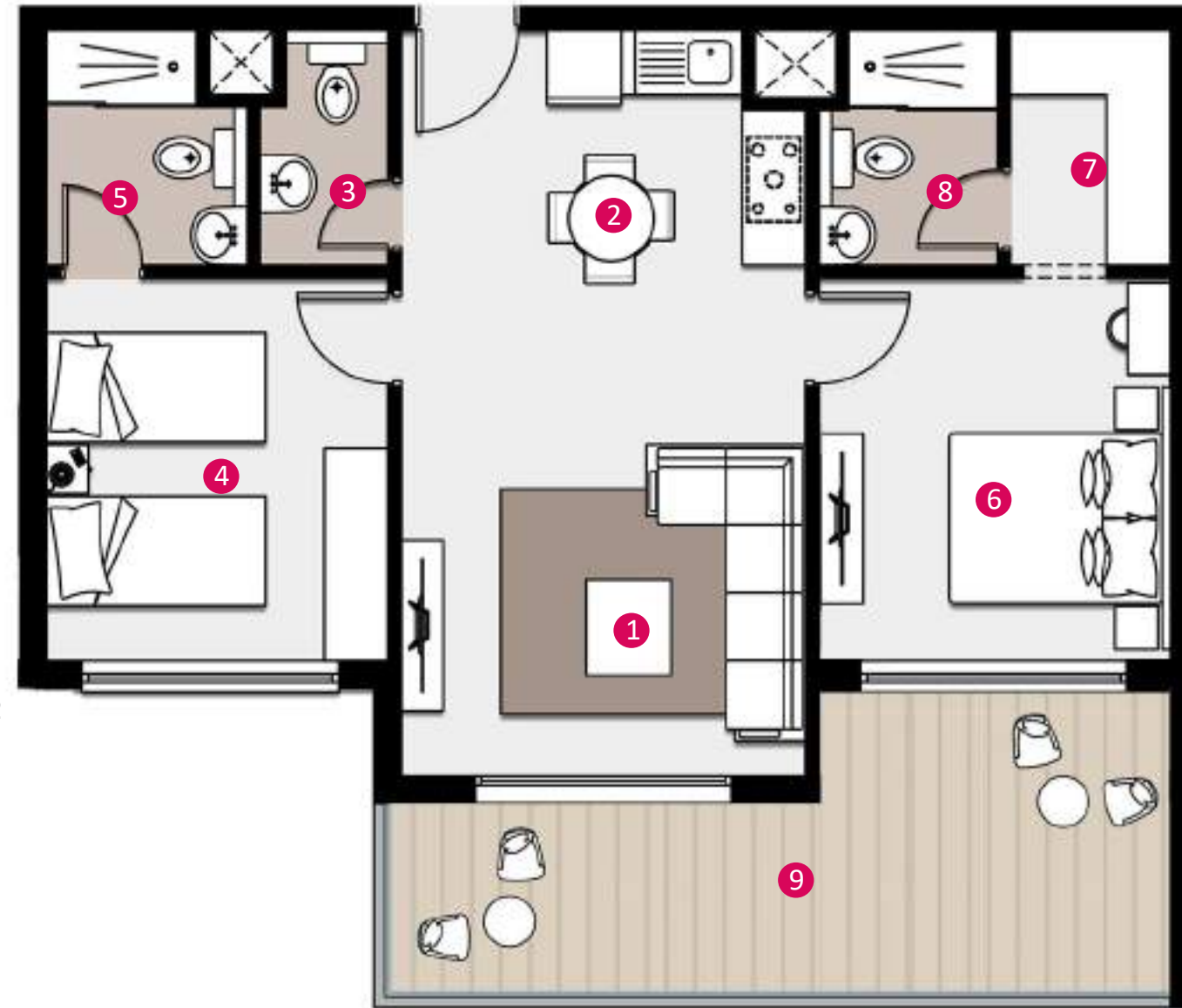


Sway CHALET

TWO BEDROOMS (B)

1- Reception	3.65 x 3.80 m
2- Dining and Kitchen	3.35 x 3.80 m
3- Guest Bathroom	1.20 x 2.20 m
4- Bedroom 1	3.20 x 3.60 m
5- Bathroom 1	1.90 x 2.20 m
6- Master Bedroom	3.30 x 3.60 m
7- Dressing	1.50 x 2.20 m
8- Master Bathroom	1.70 x 2.20 m
9- Terrace	3.00 x 7.60 m
Gross area Without Terraces	87 M²
Terraces Net Area	18 M²

BUA **105 M²**



TYPICAL FLOOR



Sway CHALET

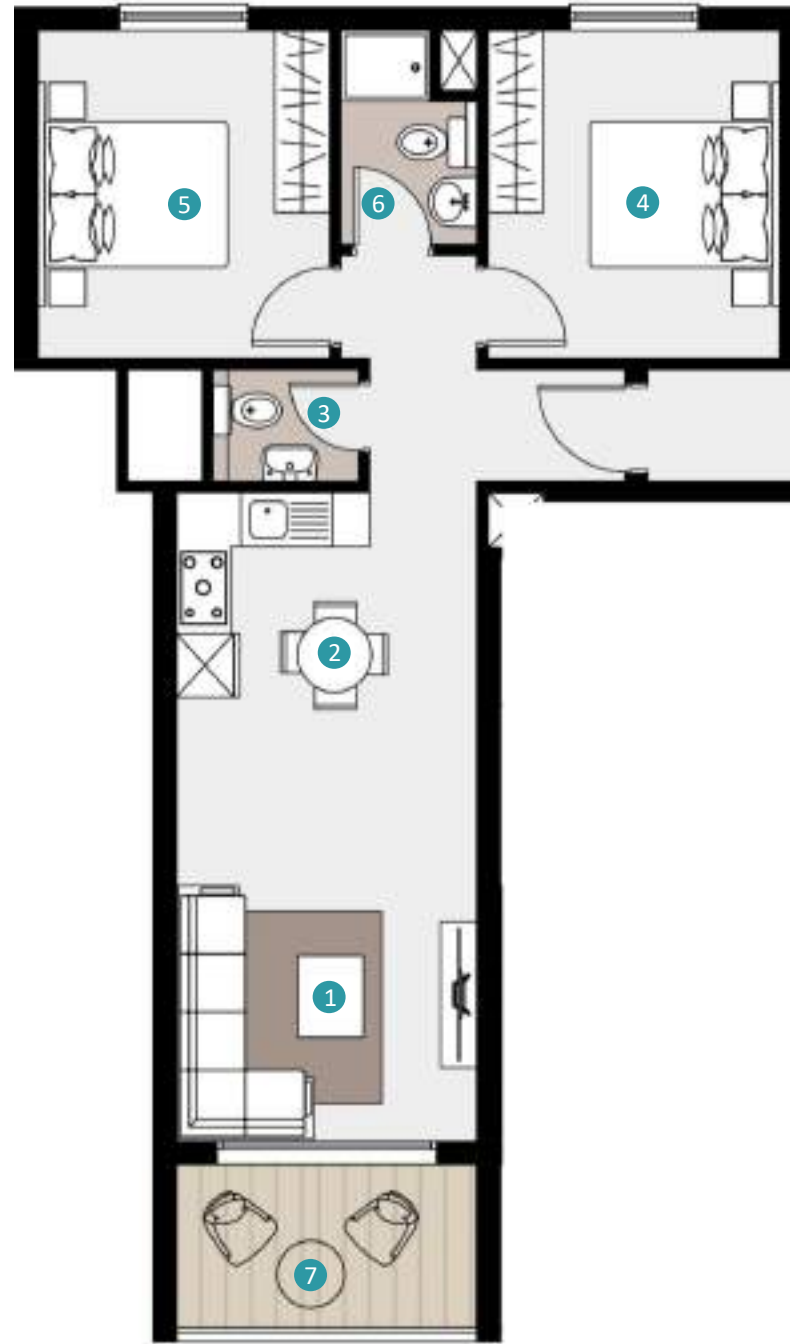
TWO BEDROOMS (C)

- | | |
|-----------------------|---------------|
| 1- Reception | 3.40 x 4.00 m |
| 2- Dining and Kitchen | 3.15 x 3.40 m |
| 3- Guest Bathroom | 1.20 x 1.70 m |
| 4- Bedroom 1 | 3.30 x 3.60 m |
| 5- Bedroom 2 | 3.20 x 3.60 m |
| 6- Bathroom 1 | 1.45 x 2.35 m |
| 7- Terrace | 1.90 x 3.60 m |

Gross area Without Terraces **81 M²**

Terraces Net Area **7 M²**

BUA **88 M²**



TYPICAL FLOOR

Sway CHALET

THREE BEDROOMS (A)

- 1- Reception 4.00 x 7.35 m
- 2- Kitchen 2.40 x 4.00 m
- 3- Lobby 1.15 x 3.30 m
- 4- Bedroom 1 3.20 x 3.30 m
- 5- Bedroom 2 3.20 x 3.30 m
- 6- Bathroom 1 1.60 x 2.30 m
- 7- Master Bedroom 3.30 x 3.60 m
- 8- Master Bathroom 1.60 x 2.30 m
- 9- Terrace 1 3.00 x 4.50 m
- 10- Terrace 2 2.20 x 3.65 m

Gross area Without Terraces **115** M²
 Terraces Net Area **21** M²

BUA **136** M²



TYPICAL FLOOR



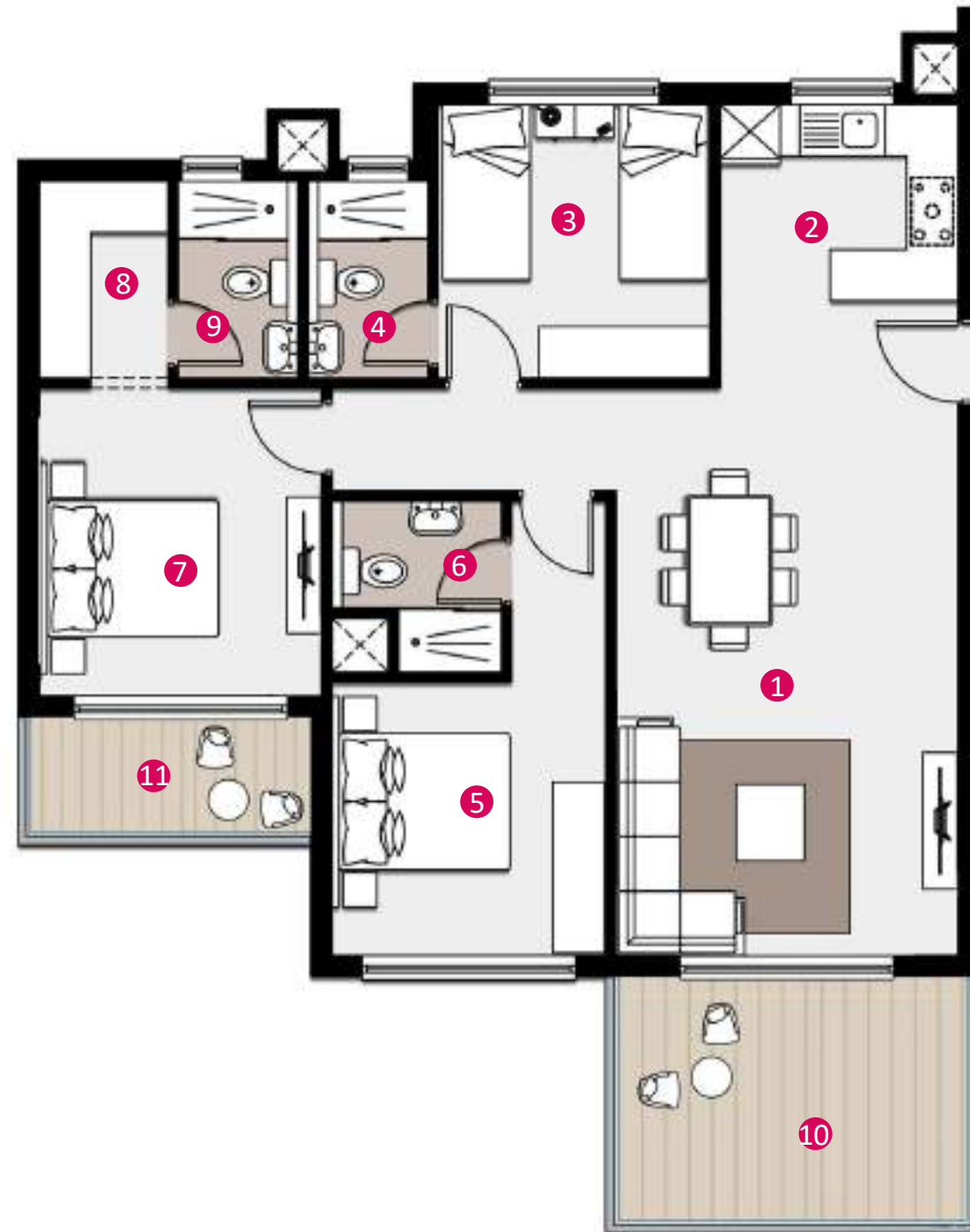
Sway CHALET

THREE BEDROOMS (B)

- 1- Reception and Dining 4.00 x 6.65 m
- 2- Kitchen 2.80 x 3.30 m
- 3- Bedroom 1 3.20 x 3.20 m
- 4- Bathroom 1 1.40 x 2.30 m
- 5- Bedroom 2 3.20 x 3.20 m
- 6- Bathroom 2 2.00 x 2.00 m
- 7- Master Bedroom 3.30 x 3.60 m
- 8- Dressing 1.50 x 2.30 m
- 9- Master Bathroom 1.30 x 2.30 m
- 10- Terrace 1 3.00 x 4.40 m
- 11- Terrace 2 1.50 x 3.40 m

Gross area Without Terraces **122** M²
 Terraces Net Area **18** M²

BUA **140** M²



TYPICAL FLOOR

